

# Investor Information

(As of March 31, 2002)

## Date of Foundation

December 27, 1952

## Head Office

3-5-10, Haneda Airport,  
Ota-ku, Tokyo 144-0041, Japan  
TEL: 81-3-5756-9596  
FAX: 81-3-5756-5659  
URL: <http://www.ana.co.jp/>

## Number of Employees

29,095 (Consolidated)  
12,978 (Non-consolidated)

## Paid-in Capital

¥86,239,793 thousand

## Number of Shares of Common Stock

Authorized: 2,203,200,000 shares  
Issued: 1,536,082,686 shares

## Number of Shareholders

184,789

## Stock Listings

Tokyo, Osaka, London, and Frankfurt

## Major Shareholders

	Number of shares held (Thousands)	Percentage of total shares in issue
Nagoya Railroad Co., Ltd. <sup>1</sup>	65,544	4.27%
Japan Trustee Services Bank, Ltd. (Trust account) <sup>2</sup>	50,286	3.27
Mitsui Sumitomo Insurance Co., Ltd.	34,569	2.25
Sumitomo Mitsui Banking Corporation	33,547	2.18
Nippon Life Insurance Company	30,963	2.02
The Tokio Marine and Fire Insurance Co., Ltd.	30,535	1.99
The Asahi Shimbun	24,376	1.59
All Nippon Airways Co., Ltd., Employee Stock Ownership Association	24,342	1.58
Nissay Dowa General Insurance Company, Ltd.	23,011	1.50
UFJ Trust Bank Limited	22,865	1.49
<b>Total</b>	<b>340,039</b>	<b>22.14%</b>

Notes: 1. The 65,544 thousand shares held by Nagoya Railroad Co., Ltd., include 8,500 thousand shares associated with retirement benefit trust agreements for Nagoya Railroad employees.

2. Shares held by Japan Trustee Services Bank, Ltd. (JTSB), were initially entrusted to The Sumitomo Trust and Banking Co., Ltd., or The Daiwa Bank, Limited, and subsequently entrusted by those institutions to JTSB.

## Transfer Agent

The Sumitomo Trust and Banking Co., Ltd.  
1-10, Nikko-cho, Fuchu, Tokyo 183-8701, Japan

## Auditor

Shin Nihon & Co.

## American Depositary Receipts

Ratio (ADR:ORD): 1:2

Exchange: OTC (Over-the-Counter)

Symbol: ALNPY

CUSIP: 016630303

Depository:

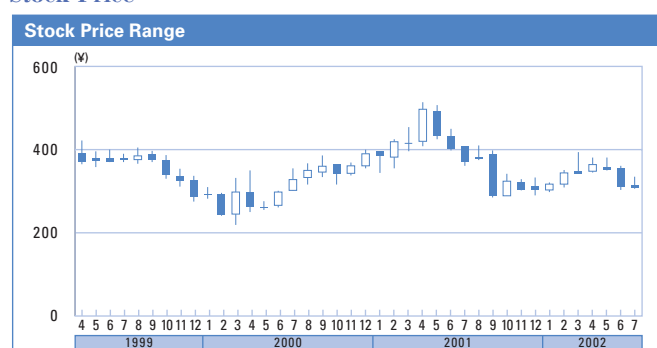
The Bank of New York  
101 Barclay Street, 22 West, New York, NY 10286, U.S.A  
TEL: 1-212-815-2042  
U.S. Toll Free: 1-888-269-2377 (888-BNY-ADRS)  
URL: <http://www.adrbny.com>

## Stock Price and Ratios (Non-consolidated)

	1998	1999	2000	2001	2002
<b>Stock Price* (¥):</b>					
High	790	685	422	454	<b>505</b>
Low	468	335	219	250	<b>289</b>
<b>PER (times):</b>					
High	-	-	-	-	-
Low	-	-	-	-	-
<b>Price/Cash Flow Ratio (times):</b>					
High	18.2	16.9	16.6	38.2	<b>21.4</b>
Low	10.8	8.3	8.6	21.0	<b>12.3</b>
<b>PBR (times):</b>					
High	6.2	5.6	3.6	4.1	<b>5.0</b>
Low	3.7	2.7	1.9	2.3	<b>2.8</b>
<b>Net Income (Loss) per Share (¥)</b>	(1.85)	(4.57)	(6.75)	(19.96)	<b>(8.38)</b>
<b>Equity per Share (¥)</b>	127.38	122.81	117.53	110.62	<b>101.77</b>

\* Tokyo Stock Exchange

## Stock Price



## Airline Ranking

