

Investor Information

(As of March 31, 2001)

Date of Foundation

December 27, 1952

Head Office

3-5-10, Haneda Airport,
Ota-ku, Tokyo 144-0041, Japan
TEL: 81-3-5756-9596
FAX: 81-3-5756-5659
URL: <http://www.ana.co.jp/>

Number of Employees

29,358 (Consolidated)
13,090 (Non-consolidated)

Paid-in Capital

¥86,079,793,277

Number of Shares of Common Stock

Authorized: 2,203,200,000 shares
Issued: 1,535,023,084 shares

Number of Shareholders

168,616

Stock Listings

Tokyo, Osaka, London, and Frankfurt

Major Shareholders

	Number of shares held (Thousands)	Percentage of total shares in issue
Japan Trustee Services Bank, Ltd. (Trust account) ¹	82,541	5.38%
Nagoya Railroad Co., Ltd. ²	67,310	4.38
Kyoei Life Insurance Co., Ltd.	32,854	2.14
The Tokio Marine and Fire Insurance Co., Ltd.	30,549	1.99
The Asahi Shimbun	24,376	1.59
The Dowa Fire and Marine Insurance Co., Ltd.	23,085	1.50
All Nippon Airways Co., Ltd., Employee Stock Ownership Association	22,635	1.47
The Sakura Bank, Limited	21,881	1.43
The Bank of Tokyo-Mitsubishi, Ltd.	21,188	1.38
Tokyu Corporation	20,171	1.31
Total	346,594	22.58

Notes: 1. Shares held by Japan Trustee Services Bank, Ltd. (JTSB), were initially entrusted to The Sumitomo Trust and Banking Co., Ltd., or The Daiwa Bank, Limited, and subsequently entrusted by those institutions to JTSB.

2. The 67,310 shares held by Nagoya Railroad Co., Ltd., include 8,500 shares associated with retirement benefit trust agreements for Nagoya Railroad employees.

Transfer Agent

The Sumitomo Trust and Banking Co., Ltd.
1-10, Nikko-cho, Fuchu, Tokyo 183-8701, Japan

Auditor

Century Ota Showa & Co.*

* As of July 1, 2001, Century Ota Showa & Co. changed its corporate name to Shin Nihon & Co.

American Depositary Receipts

Ratio (ADR:ORD): 1:2

Exchange: OTC (Over-the-Counter)

Symbol: ALNPY

CUSIP: 016630303

Depository: The Bank of New York
101 Barclay Street, 22 West,
New York, NY 10286, U.S.A
TEL: 1-212-815-2042
URL: <http://www.adrbny.com>

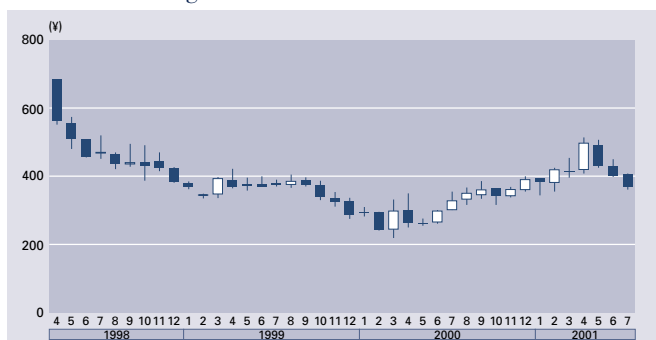
Stock Price and Ratios

Non-consolidated

	1997	1998	1999	2000	2001
Stock Price* (¥):					
High	1,200	790	685	422	454
Low	739	468	335	219	250
PER (times):					
High	442.8	-	-	-	-
Low	272.7	-	-	-	-
Price/Cash Flow Ratio (times):					
High	24.3	18.2	16.9	16.6	38.2
Low	14.9	10.8	8.3	8.6	21.0
PBR (times):					
High	9.1	6.2	5.6	3.6	4.1
Low	5.6	3.7	2.7	1.9	2.3
Net Income (Loss) per Share (¥)	2.71	(1.85)	(4.57)	(6.75)	(19.96)
Equity per Share (¥)	132.23	127.38	122.81	117.53	110.62

* Tokyo Stock Exchange

Stock Price Range



Trading Volume

